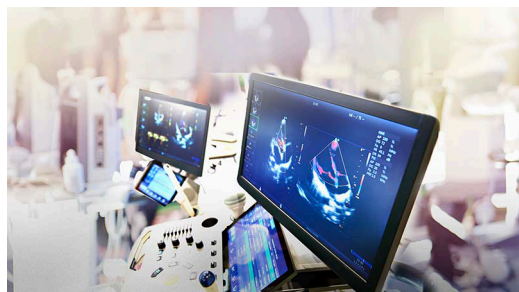


Powering Medical Imaging Applications with DC/DC Buck Converters



Jonathan Riley



From cart-based ultrasound scanners to portable smart probes that send images directly to a smartphone, the world of ultrasound imaging continues to diversify. Despite architectural differences in their design, every ultrasound system needs a DC power supply that can efficiently meet the power demands of the system and avoid interference with the ultrasound frequency range. In this article, I will review the primary design challenges when selecting a DC/DC buck regulator for medical ultrasound systems.

Synchronizing to external clock and minimizing interference

The buck regulator in the power supply must be able to synchronize to an external clock frequency. The ultrasound frequency band used for medical imaging is typically within the range of 2 MHz to 20 MHz. Therefore, when designing a switch-mode power supply for any ultrasound system, it is imperative that the switching frequency of the buck regulator does not interfere with the ultrasound band. A buck regulator with a low switching frequency will keep the fundamental and early harmonic frequencies out of the ultrasound band, but some harmonics will still persist. By synchronizing the switching frequency of the buck regulator to an external primary clock, you can control, monitor and precisely filter the switching frequency and its harmonics out of the ultrasound band.

While I'm on the topic of interference, it is also important to keep in mind the intrinsic electromagnetic interference (EMI) produced by any buck regulator in an ultrasound power supply. Even when the switching frequency and its harmonics are filtered, buck regulators can generate broadband frequencies that interfere with the rest of the system. Proper printed circuit board layout can greatly improve EMI, but to achieve optimum performance, consider using a buck regulator specifically designed to have low EMI. The [LMQ61460](#), for example, has integrated bypass capacitors in addition to other design features (like external frequency synchronization) that minimize EMI. To confirm that a device truly has low EMI, check to see if the data sheet includes data from radiated or conducted EMI testing (or both) in the Other Common Conditions section. [Figure 1](#) shows the conducted EMI of the LMQ61460.

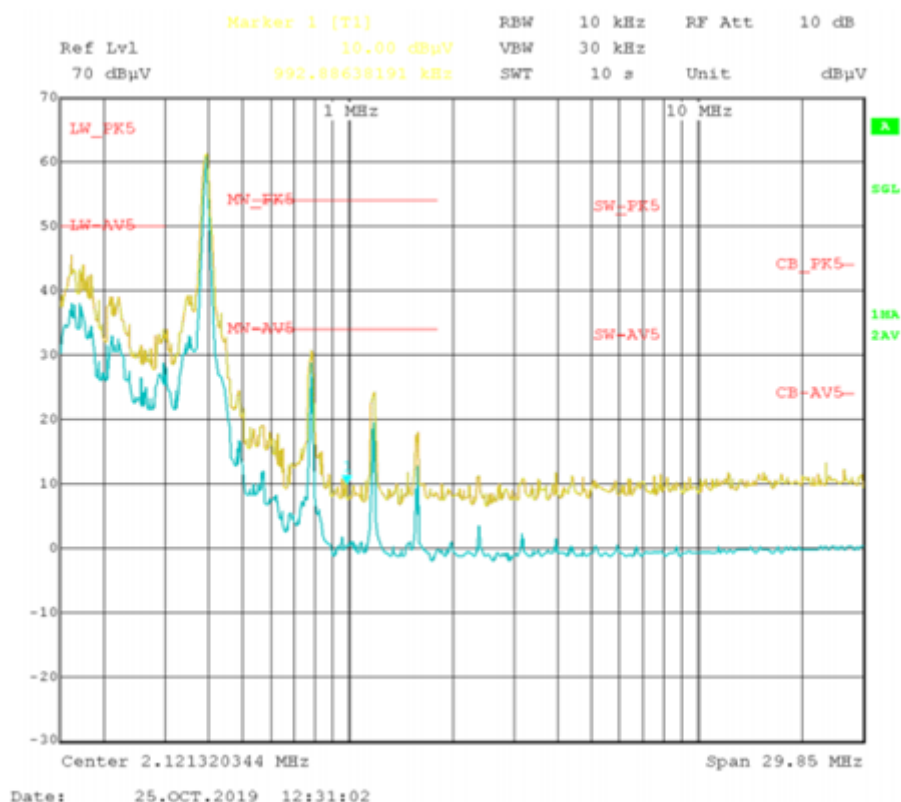


Figure 1. Conducted EMI of the LMQ61460 versus Comité International Spécial des Perturbations Radio 25 (limits: yellow, peak signal; blue: average signal; $F_{SW} = 400$ kHz; $V_{OUT} = 5$ V; $I_{OUT} = 5$ A)

Scaling to multiple power rails

A buck regulator that can handle multiple current and voltage requirements, including negative voltage rails, can be highly advantageous. Ultrasound systems typically have multiple power rails, each designed to rest at a different voltage and deliver a different current. You can use a device with a wide input voltage range, wide output voltage range and high-enough current limit to scale one power solution to all needed power rails (including negative output rails).

Leveraging one device to power all of the rails can help you optimize the system's bill of materials (BOM) and simplify the layout process; if these benefits are important to you, consider a module approach. Figure 2 shows a portion of the block diagram for [Programmable Ultrasound Power Supply Reference Design](#). The LMZ34202 is a buck converter module with an integrated output inductor that is used in the mentioned reference design to regulate the positive voltage rails, with a separate module, LMZ34002, used for the negative voltage rail, VEE. This is a perfectly acceptable design. But if the designer wanted to further simplify BOM and layout process, he or she could have used a device with a higher current rating, say the [TPSM53604](#). The higher 4-A current rating of this buck power module would have allowed it to regulate the 5-V as well as -5-V rail.

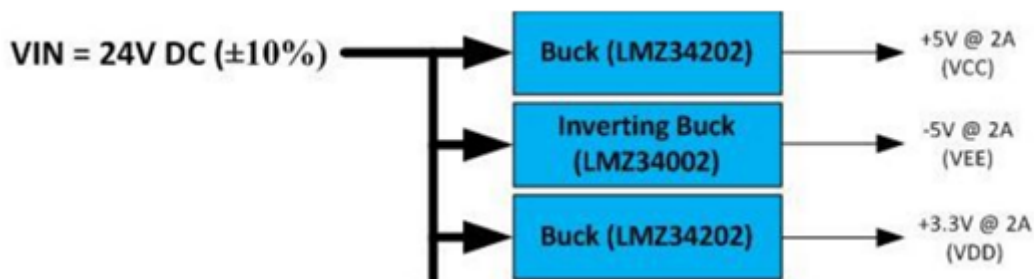


Figure 2. Three Separate Power Rails. Two Regulated with the LMZ34202 and One Regulated with the LMZ34002.

Ensuring high efficiency and power density

The medical industry continues its push to make ultrasounds more accessible by making them more portable. For battery-powered systems like portable ultrasounds and smart probes, the efficiency of the buck regulator under all operating conditions is essential to maximizing battery life. Portable applications also present the challenge of limited space. Although these are valuable features in stationary ultrasounds, to improve the portability of your system, consider selecting a buck regulator with:

- High efficiency at the preferred operating switching frequency.
- Low quiescent current to reduce battery drain during no-load and light-load conditions.
- High power density to save space.

Of course, it can be difficult to achieve high efficiency and high power density when working with switching power supplies that require additional filtering to minimize noise. In such scenarios, you might choose to work with specialized DC/DC buck converters, such as the low-noise and low-ripple [TPS62912](#) or [TPS62913](#), which offer excellent efficiency as well as external clock synchronization, and use integrated ferrite-bead filter compensation to filter out high-frequency noise.

Conclusion

When designing a DC/DC power supply for ultrasound, consider the unique demands of the system. The ability to synchronize to an external clock is paramount in order to effectively reduce and control harmonics in the ultrasound band. A buck regulator with a wide input voltage, wide output voltage and acceptable current limit will enable you to scale your solution and optimize your BOM. Finally, when selecting buck converters for portable applications, consider features such as high power density, high efficiency and low quiescent current to maximize efficiency.

Additional resources

- Check out these [TI reference designs](#) for more information about ultrasound systems.
- Read the application notes:
 - [“Topology Selection for Isolated Power Supplies in Patient Monitor”](#) to explore an isolated power-supply design for ultrasound systems.
 - [“Working With Inverting Buck-Boost Converters”](#) to learn how to determine input and output limits of a buck converter when implementing it as a negative output voltage rail.
- Watch the training video, [“Rechargeable medical devices and their design considerations.”](#)
- Read the technical article, [“Minimize noise and ripple with a low-noise buck converter.”](#)

IMPORTANT NOTICE AND DISCLAIMER

TI PROVIDES TECHNICAL AND RELIABILITY DATA (INCLUDING DATA SHEETS), DESIGN RESOURCES (INCLUDING REFERENCE DESIGNS), APPLICATION OR OTHER DESIGN ADVICE, WEB TOOLS, SAFETY INFORMATION, AND OTHER RESOURCES "AS IS" AND WITH ALL FAULTS, AND DISCLAIMS ALL WARRANTIES, EXPRESS AND IMPLIED, INCLUDING WITHOUT LIMITATION ANY IMPLIED WARRANTIES OF MERCHANTABILITY, FITNESS FOR A PARTICULAR PURPOSE OR NON-INFRINGEMENT OF THIRD PARTY INTELLECTUAL PROPERTY RIGHTS.

These resources are intended for skilled developers designing with TI products. You are solely responsible for (1) selecting the appropriate TI products for your application, (2) designing, validating and testing your application, and (3) ensuring your application meets applicable standards, and any other safety, security, regulatory or other requirements.

These resources are subject to change without notice. TI grants you permission to use these resources only for development of an application that uses the TI products described in the resource. Other reproduction and display of these resources is prohibited. No license is granted to any other TI intellectual property right or to any third party intellectual property right. TI disclaims responsibility for, and you will fully indemnify TI and its representatives against, any claims, damages, costs, losses, and liabilities arising out of your use of these resources.

TI's products are provided subject to [TI's Terms of Sale](#) or other applicable terms available either on [ti.com](#) or provided in conjunction with such TI products. TI's provision of these resources does not expand or otherwise alter TI's applicable warranties or warranty disclaimers for TI products.

TI objects to and rejects any additional or different terms you may have proposed.

Mailing Address: Texas Instruments, Post Office Box 655303, Dallas, Texas 75265
Copyright © 2023, Texas Instruments Incorporated